



INSTANT SHELTERS

A STEP BY STEP GUIDE
TO ERECTING THE 4 LEG
CANOPRO ELITE SHELTER



SHELTER GUIDE

Things You Should Know

- ⤴ Where possible, two people should erect the shelter.
- ⤴ Do not fully extend the frame until the canopy is attached. The further the frame is pulled out, the higher the centre post goes, making it difficult to pull the canopy over.
- ⤴ We recommend for first time use the moving joints are lubricated with WD40 or a silicone spray.

1

Open and remove frame from box.



2



Standing at opposite sides of the frame, hold a leg in each hand. Carefully lift the frame slightly off the ground whilst moving backwards to extend the frame outwards until the legs are an arms width apart. This will need to be done on each side if erecting the shelter alone.

3

Fasted neoprene joint protectors to the shelter frame corners and connecting joints using the attached velcro straps.



VISIT US AT:

SURFTURF.CO.UK

CALL US ON:

01925 819608

SHELTER GUIDE

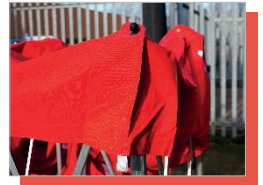
4



Remove the canopy from the box, unfold it and locate the corners.

5

Carefully pull the canopy over the top of the frame and ensure all corners are placed in position. Screw in corner baubles through the corner hoops of the canopy and into the hole on the top of the legs to secure canopy.



6



Stand opposite each other and take hold of the cross bars, walk the frame out as far as possible.

7

Your frame should now be fully extended outwards.



VISIT US AT:

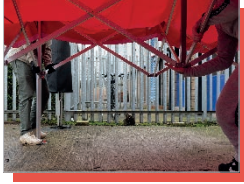
SURFTURF.CO.UK

CALL US ON:

01925 819608

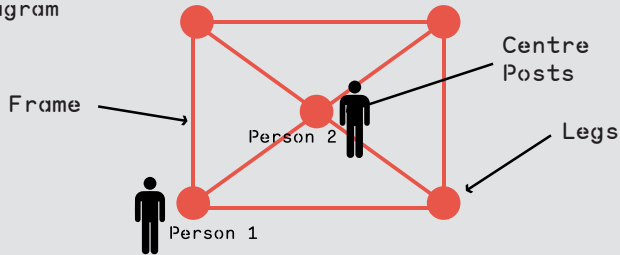
SHELTER GUIDE

8



To extend the shelter upwards person 1 stands at one of the corner legs, with person 2 holding the nearest centre post underneath the shelter.

Step 8/9 Diagram



9

Person 1 at the corner leg needs to push the sliding joint up. At the same time person 2 needs to push the centre post up until it clicks into position. This will extend the framework upwards even further. The pin should locate in to the hole at the top of the leg. Once this clicks in to place repeat with the remaining 3 legs and push the sliding joint into place.



VISIT US AT:

SURFTURF.CO.UK

CALL US ON:

01925 819608

INCREASING HEIGHT

Things You Should Know

⤴ If you are having trouble getting the sliding joint to click in to place, roll the valance up slightly, this will give you a bit more room to push the joint up. Once located just roll the valance back down.

⤴ There are five different height settings on the leg.

⤴ Once the shelter is at its full size, extend the legs upwards to increase the height.

⤴ To do this, you pull the red ring at the bottom of the leg and the inner leg will slide out.

⤴ Pull the inner leg down and it will automatically locate in to the first height setting.



⤴ When lifting the outer leg, put pressure on the footplate so the inner leg extends.

⤴ Once you have completed one side, move over and repeat the process for the opposite side.

VISIT US AT:

SURFTURF.CO.UK

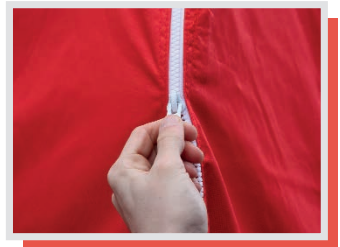
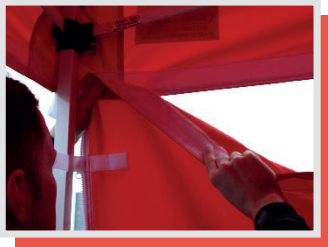
CALL US ON:

01925 819608

ATTACHING SIDES

⤴ Firstly, find the side of the sidewall with the long strip of velcro and align it to the long piece of velcro on the inside of the canopy at the bottom of the valance.

⤴ Move along the wall attaching the velcro in small increments making sure it is tight.



⤴ Once the velcro across the top is attached, wrap the straps around the frame leg.

⤴ Zip the next wall to the shelter and continue to attach the velcro.

Things You Should Know

⤴ The sidewalls are designed to be a tight fit, this ensures they look neat and professional, if you struggle to join the last side, use the additional joining strip we provide with all sides. We recommend using this for the first few uses of the shelter, until the material stretches slightly.

⤴ If more than one piece is required it means that the sidewalls aren't being pulled tight enough.

VISIT US AT:

SURFTURE.CO.UK

CALL US ON:

01925 819608

CANOPRO ELITE SPARES



7045
Corner Leg
Complete



7030
Corner Top
(Without Inner Leg)



7398
Inner Leg



7046
Middle Leg
Complete



7101
Middle Leg Top



7049
Centre Pole
with Plastic Cap



7102
Centre Pole Top Section
Incl Mushroom



7048
Single Cross Bar



7104
Corner Leg
Sliding Joint



7031
Corner Leg
Top Joint



7032
Corner Sliding
Joint



7039
Middle Leg
Sliding Joint



7035
Three Way Joint



7040
Middle Leg
Top Joint



7033
Leg Adjust Joint



7103
Corner Leg
Top Joint

CUSTOMER MUST CONFIRM SHELTER SIZE & GRADE WHEN PURCHASING SPARE PARTS

ALL COSTS ARE INCLUDING VAT, CARRIAGE WILL BE CHARGED ON ALL ORDERS FOR SPARES

CANOPRO ELITE SPARES



£35

Double Cross Bar
(3m x 2m & 4m x 2m)



£39

Double Cross Bar
(8m x 4m & 6m x 4m)



£37

Centre Pole Complete
(8m)



£8

Centre Pole Bottom Section
(8m)



£39

Corner Leg
(8m x 4m & 6m x 4m)



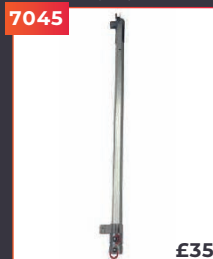
£18

Inner Leg
(8m x 4m & 6m x 4m)



£37

Corner Leg
(3m x 2m & 4m x 2m)



£35

Corner Leg Complete
(8m)



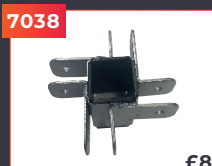
40p

Screw To Attach Joint To Leg
(Set of 4)



£2.50

Bauble



£8

Centre Pole Sliding Joint



£35

Double Cross Bar With Connector



£3.50

Cross Bar Connector



£6

Centre Pole Mushroom



£1

Cross Bar Connector Nut & Bolt

CUSTOMER MUST CONFIRM SHELTER SIZE & GRADE WHEN PURCHASING SPARE PARTS

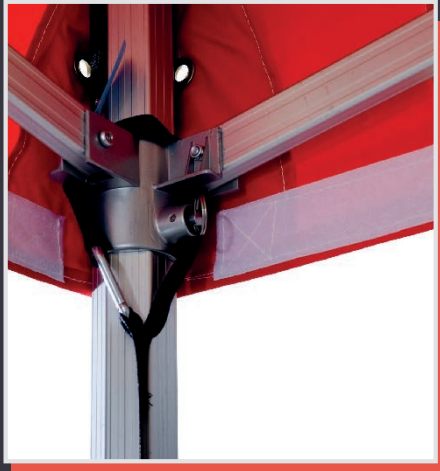
ALL COSTS ARE INCLUDING VAT, CARRIAGE WILL BE CHARGED ON ALL ORDERS FOR SPARES

ACCESSORIES

Neoprene Joint Protectors

Our neoprene protectors cover all joints, connectors and central joints to protect the canopy material from being damaged against the frame, increasing the life span of your instant shelter.

They are vital if the shelter is folded and transported with the canopy left on. They are very simple to fit. On first opening the frame, prior to attaching the canopy, fit the relevant neoprene protectors to the correct joint, they simply fit over the joints and velcro into place.



Anchor Kit

Comprising of a 360mm long metal stake and a webbing anchor strap. This is designed to safely strap around the frame.

Firstly, clip the strap around the inside top corner joint. Run this down the inside of the corner leg. Place a large metal stake through the loop and pull tight to secure into the ground.

Canopy Protector Bag

Included with all of our instant shelters is a canopy protector cover. This drawstring bag goes over the canopy when the frame is packed down, prior to putting the shelter in the bag. It assists in the protection of your canopy and stops it from getting marked by the frame bag.





INSTANT SHELTERS

Surf & Turf Instant Shelters Ltd

Unit 7 Tatton Court, Kingsland Grange, Warrington, Cheshire WA1 4RR

01925 819608 info@surfturf.co.uk